



# Certificate of Analysis

## CANNABUSINESS LABORATORIES, LLC

Received Date **8/17/2023**

COA Released **8/22/2023**

Comments

Sample ID **230815012**

Order Number **CB230815007**

Sample Name **GRAPECANDY**

External Sample ID

Batch Number

Product Type **Flower**

Sample Type **Flower**

### CANNABINOID PROFILE

Analyte	LOQ (%)	% Dry Weight	mg/g
CBC	0.01	ND	ND
CBD	0.01	ND	ND
CBDa	0.01	0.056	0.557
CBDV	0.01	ND	ND
CBG	0.01	0.042	0.424
CBGa	0.01	0.454	4.543
CBN	0.01	ND	ND
d8-THC	0.01	ND	ND
d9-THC	0.01	0.285	2.854
THCa	0.01	22.13	221.3

**Total Cannabinoids** **23.27** **232.7**

**Total Potential THC** **19.69** **196.9**

**Total Potential CBD** **0.049** **0.489**

**Total Potential CBG** **0.441** **4.412**

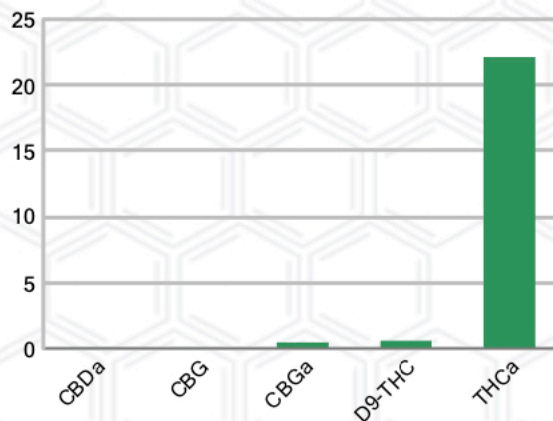
**Ratio of Total Potential CBD to Total Potential THC** **0.00 : 1**

**Ratio of Total Potential CBG to Total Potential THC** **0.02 : 1**

### SAMPLE IMAGE



### CANNABINOIDS % Dry Weight



\*Total Cannabinoids refers to the sum of all cannabinoids detected.

\*Total Potential CBD = (0.877 x CBDa) + CBD. \*Total Potential THC = (0.877 x THCa) + THC. \*Total Potential CBG = (0.877 x CBGa) + CBG.

\*Total Potential THC/CBD are calculated to take into account the loss of an acid group during decarboxylation.



*J. Hobgood*  
Laboratory Manager

SIGNATURE

Jamie Hobgood

LABORATORY MANAGER

08/22/2023 4:56 PM

DATE

