

Cinnamon Toast

 Sample ID: SA-10072021-4619
 Batch:
 Type: In-Process Materials
 Matrix: Concentrate - Distillate

 Received: 10/07/2021
 Completed: 10/19/2021

Client

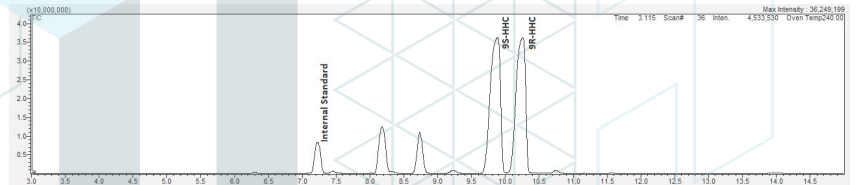
 The Wyoming Company LLC.
 30 North Gould St.
 Sheridan, WY 82801
 USA


Summary

Test	Date Tested	Status
Cannabinoids (Additional)	10/19/2021	Tested

Cannabinoids by HPLC-PDA, LC-MS/MS, and/or GC-MS/MS

Analyte	LOD (%)	LOQ (%)	Result (%)	Result (mg/g)
(9R)-HHC			46.9	469.0
(9S)-HHC			52.2	522.0



ND = Not Detected; NT = Not Tested; LOD = Limit of Detection; LOQ = Limit of Quantitation; RL = Reporting Limit; Δ = Delta; Total Δ9-THC = Δ9-THCA * 0.877 + Δ9-THC; Total CBD = CBDA * 0.877 + CBD;



10/19/2021

